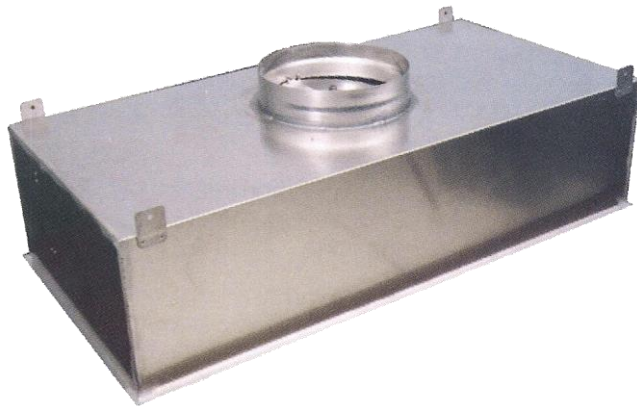


Model GSFH HEPA Filter Terminal Housing



Model GSFH of HEPA filter terminal housing has been specifically designed to make installation and filter replacement much simpler and quicker. They may be installed in a variety of ceiling types, including tee-bar ceilings, plaster ceilings. The GSFH features a gel seal design offering superior protection against bypass leakage. The gel-seal interface assures a positive seal between the replaceable HEPA/ULPA filter and the housing. The design allows access to the filters from the room side without disturbance to the installed housing. Bottom loading filter made room side filter change-out quick and easy.

Features

- Choice of sheet steel, aluminium or stainless steel.
- Further replaceable from the room side.
- Designed for installation in tee-bar or gypsum board ceilings.

Finish

- Mill finish or painted white. Other color is also available on request.

Construction

- Housing is constructed of 1.2mm thick galvanised steel painted internally.
- Grille is 40% perforation painted steel.
- Body of housing is continuously sealed with sealant.
- Joint between housing and trim is sealed with sealant.

Order Code

